

---

**FAUNISTIC RECORDS FROM THE CZECH REPUBLIC – 388**

---

**Lepidoptera:****Incurvariidae**

*Lampronia capitella* (Clerck, 1759). Moravia bor., Jakubčovice nad Odrou, Suchá Dora Nature Reserve (6373), 28.v.2004, 1 ♂, T. Kuras leg., det. et coll.; Moravia mer., Česká (6765), 20.v.2015, 1 ♂, Z. Laštůvka leg., det. et coll. Species regarded as a pest of red and blackcurrants (*Ribes* spp.), probably generally overlooked as adult. In the Czech Republic recorded from several localities in Bohemia (Sterneck & Zimmermann 1933, Heřman et al., in press) and one locality in Moravia without faunistic details (Kuras & Mazalová 2010). Distributed throughout northern and central Europe, and in all neighbouring countries (van Nieukerken 2013). The first concrete records from Moravia.

**Bucculatricidae**

*Bucculatrix humiliella* Herrich-Schäffer, 1855. Moravia mer., Břeclav env., Lanžhot-Soutok, Důbravka hunting lodge (7367), 14.vi.2014, 1 ♂, J. Šumpich leg., J. Liška det., coll. National museum, Prague (Fig. 1). From the Czech Republic it is known only from Bohemia, namely from Horní Planá in southern Bohemia (published as *Bucculatrix fatigatella* Heyden, 1863) (Liška et al. 2008) and Křivoklát in central Bohemia (Šumpich et al. 2006). Sparsely distributed in central and northern Europe, recorded also in France (Mey 2013) and Spain (Laštůvka & Laštůvka 2009). New species for Moravia.

**Gracillariidae**

*Sauterina hofmanniella* (Schleich, 1867). Moravia mer.: Brno-Jundrov (6765), 25.v.1945, 1 ♂, leg. F. Gregor, A. Laštůvka det. et coll.; Milovice, Milovický les forest (7166), 12.vii.2014, mines with larvae on *Lathyrus niger*, iii.2015, 1 ♂ ex l., A. Laštůvka leg., det. et coll. In the Czech Republic known from Bohemia, Prague (Sterneck & Zimmermann 1933) and newly confirmed from the same region by Šumpich & Skyva (2008). From Moravia only known from an old record from the Milovický les forest near Mikulov (Zimmermann & Skala 1947). Distributed in many parts of northern, central and partly southern Europe, and in all neighbouring countries (Buszko 2013). Confirmed occurrence in Moravia after 70 years.

**Acrolepiidae**

*Acrolepia autumnitella* Curtis, 1838. Moravia mer., Hrabětice – Travní Dvůr (7264), 17.vii.2015, 1 ♀, J. Liška leg., det. et coll. (Fig. 2). In the Czech Republic known so far only from Bohemia (Novák et al. 1997, Laštůvka & Liška 2011). In Europe widely distributed species, recorded in all neighbouring countries (Gaedike & Agassiz 2013). New species for Moravia.

## Depressariidae

*Depressaria floridella* (Mann, 1864). Moravia mer., Pálava Protected Landscape Area, Pavlov, Děvín-Kotel-Soutěska National Nature Reserve, Kotel (7165), 21.vi.1998, 1 ♂, M. Petrů leg., J. Liška det., G. Elsner rev., coll. F. Fiala. Poorly known species, confused with other related species in the past. Recently it was recorded in northern and central Bohemia as a first reliable records for central Europe, the voucher specimens were compared with the type material by G. Elsner, J. Liška, and J. Šumpich (Šumpich et al. 2013). Previously known only from Turkey (locus typicus) and Greece (Lvovsky 2013). The food plant in the Czech Republic is probably *Seseli* spp. (Liška 2015). New species for Moravia.

## Elachistidae

*Elachista scirpi* Stainton, 1887. Moravia mer.: Velké Bílovice – Trkmanský Dvůr (7167), 30.v.2014, 1 ♂, 1 ♀, 28.v.2015, 1 ♂, both J. Liška leg., det. et coll.; Hrabětice – Travní Dvůr (7264), 17.vii.2014, 2 ♂♂ (Fig. 3), A. Laštůvka leg., J. Liška det. et coll., 17.vii.2015, 1 ♂, J. Liška leg., det. et coll. Species confined to marshy and salty biotopes with *Bolboschoenus maritimus*. In neighbouring countries, known from Austria (Huemer 2013) and Hungary (Pastoralis 2012). In Europe, it mainly occurs in northern countries, but is also recorded from Portugal, Italy and Sardinia (Kaila 2013). New species for the Czech Republic.

*Elachista consortella* Stainton 1851. Moravia mer.: Hodonín-Pánov (7168), 27.vii.2011, 1 ♂ (Fig. 4), 10.iv.2015, 1 ♂, Břeclav env., Lanžhot-Soutok, Polínka hunting lodge (7367), 11.iv.2015, 1 ♂ (Fig. 5), all J. Liška leg., det. et coll. In the Czech Republic so far found only in Bohemia (Laštůvka & Liška 2011). In central Europe recorded in Germany, Switzerland, Austria and Slovakia (Kaila 2013). In Europe it is distributed across the whole territory, with fewer records available from the Balkans (Kaila 2013). New species for Moravia.

## Coleophoridae

*Coleophora frischella* (Linnaeus, 1758). Bohemia sept., Čeřeniště, Babinské louky (5350–5450), 13.vi.2013, 1 ♂, M. Žemlička leg., det. et coll.; Moravia mer., Břeclav env., Lanžhot-Soutok, Polínka hunting lodge (7367), 29.v.2012, 1 ♂ (Fig. 6), 18.vii.2014, 1 ♂, both J. Liška leg., det. et coll. In the past a frequently confused species (cf. Stübner 2007). In the Czech Republic reliably determined records were published until recently from southern Bohemia by Šumpich et al. (2010). From Moravia only unconfirmed data are known (cf. Laštůvka & Liška 2011). Presently, the known distribution comprises Germany, Austria, Switzerland, Italy, France (Stübner 2007) and also Hungary (Buschmann et al. 2014). The first reliable records from Moravia.

*Coleophora frankii* Schmidt, 1886. Moravia mer., Bořetice-Zázmoníky (7067), 27.v.2003, 1 ♂, 7.v.2006, 1 ♀ (Fig. 7), 4.vii.2008, 1 ♀, 20.iv.2009, 1 ♂, 7.vi.2009, 1 ♂, 9.iv.2010, 1 ♂ (Fig. 8), 21.iv.2011, 2 ♂♂, 28.vi.2011, 1 ♂, all J. Liška leg., det. et coll. In the Czech Republic known only from a single record from Bohemia (Zimmermann 1943) (cf. Laštůvka & Liška 2011). Generally known only from central Europe, Croatia and Italy (Baldizzone & van der Wolf 2013). New species for Moravia.

*Coleophora paramayrella* Nel, 1993. Bohemia sept., Čeřeniřtř, Babinské louky (5350–5450), 13.vi.2013, 1 ♂, M. Źemlička leg., det. et coll., J. Liřka rev.; Bohemia centr., Radotín-Cikánka, 6.vii.2014, 2 ♂♂, J. Liřka leg., det. et coll.; Moravia mer.-or., Bílé Karpaty Protected Landscape Area, Nová Lhota-Vápenky (7171), 17.vii.2013, 2 ♂♂, 1 ♀, J. Liřka leg., det. et coll.; Moravia mer., Dolní Dunajovice, Velká Slunečná Hill (7165), 260 m a.s.l., 1.vii.2015, 1 ♀, at light, J. Sitek lgt., det. et coll. So far occurrence has been confirmed in France, Italy, Slovenia, Macedonia and Greece (Stübner 2007), also recently recorded in Slovakia (Pastoralis et al. 2011) and Hungary (Buschmann et al. 2014). New species for the Czech Republic.

## Gelechiidae

*Monochroa arundinetella* (Boyd 1857). Bohemia occ., Frantiřkovo Lázně, Soos National Nature Reserve (5840), 14.vii.1995, 1 ♂ (Fig. 9); Moravia mer.: Oleksovice (7063), 17.vii.2007, 1 ♂ (Fig. 10), J. řumpich leg., det. et coll. (published as *Monochroa suffusella* (Douglas, 1850) by řumpich & Skyva (2008)); Hodonín-Zbrod (7168), 16.vii.2015, 1 ♀, J. Liřka leg., det. et coll. Sparsely distributed species, mainly in central Europe (but not recorded in Austria, Switzerland or Slovenia) and northern Europe (Karsholt 2013). New species for the Czech Republic.

*Scrobipalpa hyoscyamella* (Stainton, 1869). Bohemia centr., Čáslav, Vrdy (6058), ix. 1866, 1 ♂ (gen. prep. GE/3071), [?Josef Müller leg.], G. Elsner det., coll. National museum, Prague (F. A. Nickerl and O. Nickerl collection) (Figs 11, 12). Although the locality label does not include a collector's name, Nickerl (1894) refers to Mr. Josef Müller's collection including material from the vicinity of "Wrdy im Čáslauer Bezirke" (now Vrdy). This specimen was originally identified as *Lita costella* (Humphrey et Westwood, 1845) and since then has been referred to in different lists of the Bohemian Lepidoptera (Nickerl 1894, Sterneck & Zimmermann 1933, Novák et al. 1997). Elsner (1998) considers this as a dubious record, and Lařtůvka & Liřka (2011) have omitted this name. *S. hyoscyamella* is known from Spain, southern France, north-eastern Austria and probably also Romania (Huemer & Karsholt 2010). New species for the Czech Republic.

*Eulamprotes libertinella* (Zeller, 1872). Bohemia centr., Zbraslav[ice] (6157), about 500 m a.s.l., 1860, 1 ♂ (gen. prep. GE/3070), without name of collector, G. Elsner det., coll. National museum, Prague (F. A. Nickerl and O. Nickerl collection) (Figs 13, 14). This voucher specimen originates most probably from the collection of Nickerl's contemporary, head forester Karl Bernard, who was living and collecting in Hetlín village a few kilometres north of Zbraslavice. *E. libertinella* primarily inhabits rocky mountain slopes at elevations above 1000 m (Huemer et al. 2014) but it has also been found below 400 m (southern Italy, 1 ♂, Pietramurata, 250 m, 19.vii.1960, K. Burmann leg.). It is known from the major part of the Alpine arc, ranging from the Maritime Alps in the southwest up to the north-eastern Austrian Limestone Alps in the north-east and the Julian Alps in the south-east (Huemer et al. 2014). The single Bohemian record has already been published by Sterneck & Zimmermann (1933) but until 2014 it was not possible to check material deposited in the National museum in Prague, and this record had either been indicated as of uncertain determination and insufficient locality data, e.g. in Novák et al. (1997), Elsner (1998) or omitted (Lařtůvka & Liřka 2011). This study confirms the historical record of *E. libertinella* in the Czech Republic.

## Tortricidae

*Bactra robustana* (Christoph, 1872). Bohemia or., Hlinsko (6261), 20.vi.1986, 1 ♀, J. Šumpich leg., det. et coll. (Fig. 15); Moravia mer.: Kobyly (7167), 21.vii.1982, 2 ♂♂, 4 ♀♀, G. Elsner leg., det. et coll., Velké Bílovice – Trkmanský Dvůr (7167), 30.v.2014, 1 ♂, 1 ♀ (Fig. 16), Hrabětice – Travní Dvůr (7264), 17.vii.2015, 1 ♀, all J. Liška leg., det. et coll. (Fig. 17), Hustopeče, 4.vi.1996, 1 ♀, J. Skyva leg. et coll., J. Šumpich det. Species confined to marsh biotopes with *Bolboschoenus maritimus*. In Europe it is known from most countries, and is recorded from all neighbouring countries except Poland (Aarvik 2013). New species for the Czech Republic.

*Rhyacionia duplana* (Hübner, [1813]). Moravia mer., Bzenec (7169), 10.iv.2015, 3 ♂♂, 1 ♀, J. Liška leg., det. et coll. (Fig. 18). From Moravia only a very old record is available, namely from Brno (Skala 1912–1913). In Europe widely distributed, in the Balkans recorded so far only from Macedonia (Aarvik 2013). Confirmed occurrence in Moravia after more than 100 years.

*Cydia exquisitana* (Rebel, 1899). Moravia mer., Valtice – Boří Dvůr (7266), 26.iv.2013, 1 ♀, A. Laštůvka & Z. Laštůvka leg. et det., confirm. et coll. J. Liška (Fig. 19), Hrabětice – Travní Dvůr (7264), 17.vii.2015, 2 ♀♀, J. Liška leg., det. et coll. Dendrophilous species, with larvae living under bark of some deciduous trees (*Ulmus* spp., *Salix* spp.) (Razowski 2003). Generally rare species, sparsely distributed from France to Russia, in neighbouring countries known from Germany, Austria, Hungary and Slovakia (Aarvik 2013). New species for the Czech Republic.

## Pyralidae

*Synphe antennalis* (Fabricius, 1794). Bohemia mer., Kardašova Řečice (6855), vi.1939, 1 ♂, K. Pflieger leg., J. Liška det., coll. B. Starý in Moravian Museum in Brno. Predominantly psammophilous species; in the Czech Republic known only from southern parts of Moravia (Laštůvka & Liška 2011). The northern border of its occurrence in central Europe goes through the Czech Republic, in neighbouring countries so far not recorded from Poland or Germany; in Europe distributed from Spain to Russia (Nuss et al. 2013). New species for Bohemia.

*Pyralis lienigialis* Zeller, 1843. Moravia mer., Brno – Černá Pole (6765), 11.vii.2014, 1 ♂, in a house (on frame of an open window), J. Marek leg., det. et coll. Synanthropic species, its larva develops on vegetable products and waste plant materials. Distributed mainly in northern parts of Europe, partly in western, southwestern and eastern Europe (Slamka 2006, Nuss et al. 2013). In central Europe, only one old record known from southeastern Poland (Buszko & Nowacki 2000, Slamka 2006). First record from the Czech Republic.

*Aglossa caprealis* (Hübner, [1809]). Moravia mer.: Brno – Černá Pole (6765), 26.vii.2013, 1 ♂, in a house, J. Marek leg., det. et coll.; Břeclav env., Lanžhot-Soutok, Důbravka hunting lodge (7367), 6.vii.2014, 1 ♂, J. Šumpich leg., det. et coll. (Fig. 21). Thermophilous species. In central Europe known from all countries except Slovakia (Nuss et al. 2013). In Europe

widely distributed, mainly in southern countries, also recorded in the British Isles and Denmark (Nuss et al. 2013). These latter records can be attributed to recent warm years. New species for the Czech Republic.

*Acrobasis dulcella* (Zeller, 1848). Bohemia centr., Praha-Šárka (5852), 1940 (without detailed data), 1 ♂, B. Starý leg., J. Liška det., coll. B. Starý in Moravian Museum in Brno (Fig. 20). Thermophilous species, confined to *Prunus spinosa*. Recorded from all Central European countries except Switzerland and Poland (Nuss et al. 2013, Lesar & Govedič 2010). In Europe it is known from Spain to Russia, but not recorded in northern countries (Nuss et al. 2013). New species for the Czech Republic.

*Cadra figulilella* (Gregson, 1871). Moravia mer.: Bzenec (7069), 15.vi.2013, 1 ♂, at light in former military training area; Rokytná (6963), 7.ix.2013, 1 ♂, at light on a rock steppe, both J. Marek leg., det. et coll. Synanthropic species with cosmopolitan distribution, its larva develops on dry stored vegetable products, or on drying plum, vine or fig fruits outdoors (Hannemann 1964, Slamka 2006). Known from nearly all European countries, in central Europe not recorded from Slovakia (Nuss et al. 2013). In the Czech Republic reported by Verner (1965) from Bohemia, without exact locality by Roesler (1973), and recently by Sitek & Vacula (2014) also from Moravia, in all cases from synanthropic situations. First documented occurrence in the wild in the Czech Republic.

## Crambidae

*Agriphila tolli* (Błeszyński, 1952). Bohemia or., Ústí-Braníšov, V hati (6558), 16.viii.2009, 1 ♂, I. Dvořák leg., det. et coll. In the Czech Republic widely distributed in southern Moravia (Laštůvka & Liška 2011). Distribution limited to central and southeastern Europe, in the neighbouring countries recorded only in Slovakia and Austria (Nuss et al. 2013). New species for Bohemia.

*Cydalima perspectalis* (Walker, 1859). Bohemia centr.: Káraný (5854), 3.ix.2015, 1 ♂, T. Jirgl leg., det. et coll. (Fig. 22); Praha-Smíchov (5952), 21.viii.2015, 1 ♀, M. Knížek leg., J. Liška det. et coll.; Praha-Bubeneč (5852), 12.ix.2015, several former feeding places on shoots of boxwood, J. Liška leg. and det., Z. Laštůvka confirm. (Fig. 28); Moravia mer.: Česká (6765), viii.2014 and 2015, larvae, Brno – Černá Pole, Arboretum of the Mendel University (6765), viii.2014, v.2015, numerous larvae, Z. Laštůvka observ. et det., Brno-Bosonohy (6865), v.2013, mass occurrence of larvae, about 50 ex. ex larva, A. Schořiková observ. et leg., Z. Laštůvka det. et coll. (Figs 24–27, 29); Břeclav env., Kančí obora forest (7267), 13.viii.2015, about 50 ex. at light; Lanžhot (7267), 14.viii.2015, several dozen specimens at light, both A. Laštůvka & Z. Laštůvka observ. et det., Lanžhot-Soutok, Důbravka hunting lodge (7367), 2.vii.2015, 1 ♂, 8.vii.2015, 1 ♂, J. Šumpich leg., det. et coll.; Moravia centr., Čelechovice na Hané (6468), 13.viii.2015, 1 ♂, light trap, J. Darebník leg., T. Kadlec det. et coll. East-Asian invasive species, confined to *Buxus sempervirens*, *B. microphylla* and other *Buxus* species. In the Czech Republic detected for the first time in southern Moravia in 2011 (cf. Šumpich 2011) and the first harmful occurrence was observed in 2013 (Šefrová et al. 2013). New species for Bohemia.

## Geometridae

*Alcis jubata* (Thunberg, 1788). Bohemia mer., Dobrá env., Stožec hill (7148), 6.vii.2013, 1 ♂, J. Uříčář leg., det. et coll. (Fig. 23). From the Czech Republic known only from older records (Skala 1931, Neumann 1971, Novák & Spitzer 1972, Jaroš et al. 2014). In Europe sparsely distributed from Spain to Russia (Hausmann et al. 2013). Confirmed occurrence in the Czech Republic after more than 40 years.

ACKNOWLEDGEMENTS. We are indebted to T. Kadlec for allowing us to use his unpublished data on *Cydalima perspectalis*. This work was financially supported by the Ministry of Culture of the Czech Republic (DKRVO 2015/13, National Museum, 00023272) (J. Šumpich) and by the project of the Ministry of Agriculture of the Czech Republic – Resolution RO 0115 (reference number 5774/2015-MZE-17011) (J. Liška, M. Knižek).

AARVIK L. 2013: Fauna Europaea: Tortricidae. In: KARSHOLT O. & NIEUKERKEN E. J. van (eds): *Fauna Europaea: Lepidoptera, Moths*. Fauna Europaea, version 2.6.2, <http://www.faunaeur.org/> (accessed 27 August 2015). – BALDIZZONE G. & van der WOLF H. 2013: Fauna Europaea: Coleophoridae. In: KARSHOLT O. & NIEUKERKEN E. J. van (eds): *Fauna Europaea: Lepidoptera, Moths*. Fauna Europaea, Version 2.6.2, <http://www.faunaeur.org/> (accessed 27 August 2015). – BUSCHMANN F., RICHTER I. & PASTORÁLIS G. 2014: A Coleophora frischella fajcsoport újabb képviselői Magyarországon. (New species of Coleophora in the frischella group from Hungary (Lepidoptera: Coleophoridae)). *Microlepidoptera.hu* 7: 9–26 (in Hungarian, English abstract). – BUSZKO J. 2013: Fauna Europaea: Gracillariidae. In: KARSHOLT O. & NIEUKERKEN E. J. van (eds): *Fauna Europaea: Lepidoptera, Moths*. Fauna Europaea, Version 2.6.2, <http://www.faunaeur.org/> (accessed 26 September 2015). – BUSZKO J. & NOWACKI J. 2000: The Lepidoptera of Poland. A distributional checklist. *Polish Entomological Monographs* 1: 1–178. – ELSNER G. 1998: Gelechiidae. Pp. 35–39. In: LAŠTŮVKA Z. (ed.): *Seznam motýlů České a Slovenské republiky (Insecta: Lepidoptera). Checklist of Lepidoptera of the Czech and Slovak Republics (Insecta: Lepidoptera)*. Konvoj, Brno, 117 pp. (in Czech and English). – GAEDIKE R. & AGASSIZ D. 2013: Fauna Europaea: Glyphipterigidae. In: KARSHOLT O. & NIEUKERKEN E. J. van (eds): *Fauna Europaea: Lepidoptera, Moths*. Fauna Europaea, Version 2.6.2, <http://www.faunaeur.org/> (accessed 27 August 2015). – HANNEMANN H.-J. 1964: *Kleinschmetterlinge oder Microlepidoptera. II. Die Wickler (s.l.) (Cochylidae und Carposinidae), Die Zünslerartigen (Pyraloidea). Die Tierwelt Deutschlands. 50. Teil*. Gustav Fischer, Jena, 401 pp. – HAUSMANN A., MIRONOV V. & VIIDALEP J. 2013: Fauna Europaea: Geometridae. In: KARSHOLT O. & NIEUKERKEN E. J. van (eds): *Fauna Europaea: Lepidoptera, Moths*. Fauna Europaea, Version 2.6.2, <http://www.faunaeur.org/> (accessed 27 August 2015). – HEŘMAN P., LIŠKA J., VÁVRA J. in press: *Motýli (Lepidoptera) Českého krasu. (Butterflies and moths (Lepidoptera) of Bohemian Karst)*. Petr Heřman, Jan Liška, Jiří Vávra, Praha. (in Czech, English summary). – HUEMER P. 2013: Die Schmetterlinge Österreichs (Lepidoptera). Systematische und faunistische Checkliste. *Studiohefte* 12: 1–304. – HUEMER P. & KARSHOLT O. 2010: Gelechiidae II (Gelechiinae: Gnorimoschemini). Pp. 1–586. In: P. HUEMER, O. KARSHOLT & M. NUSS (eds): *Microlepidoptera of Europe* 6. Apollo Books, Stenstrup. – HUEMER P., ELSNER G. & KARSHOLT O. 2014: Review of the Eulamprotes wilkella species-group based on morphology and DNA barcodes, with descriptions of new taxa (Lepidoptera, Gelechiidae). *Zootaxa* 3746: 69–100. – JAROŠ J., SPITZER K. & ZIKMUNDOVÁ H. 2014: Variability of Lepidoptera communities (moths and butterflies) along an altitudinal gradient of peat bogs from the Třeboň Basin up to the Bohemian Forest (South Bohemia, Central Europe). *Silva Gabreta* 20: 55–95. – KAILA L. 2013: Fauna Europaea: Elachistidae. In: KARSHOLT O. & NIEUKERKEN E. J. van (eds): *Fauna Europaea: Lepidoptera, Moths*. Fauna Europaea, Version 2.6.2, <http://www.faunaeur.org/> (accessed 27 August 2015). – KARSHOLT O. 2013: Fauna Europaea: Gelechiidae. In: KARSHOLT O. & NIEUKERKEN E. J. van (eds): *Fauna Europaea: Lepidoptera, Moths*. Fauna Europaea, Version 2.6.2, <http://www.faunaeur.org/> (accessed 27 August 2015). – KURAS T. & MAZALOVÁ M. 2010: Motýli (Lepidoptera) Přírodní rezervace Suchá Dora a jejího okolí (Oderské vrchy). (Butterflies (Lepidoptera) of the Suchá Dora Nature Reserve and its surroundings (Oderské vrchy Hills)). *Acta Musei Beskidensis* 2: 117–137 (in Czech, English abstract). – LAŠTŮVKA A. & LAŠTŮVKA Z. 2009: New records of mining Lepidoptera from the Iberian Peninsula (Lepidoptera: Nepticulidae, Opostegidae, Bucculatricidae, Gracillariidae). *SHILAP Revista de Lepidopterología* 37: 485–494. – LAŠTŮVKA Z. & LIŠKA J. 2011: *Komentovaný seznam motýlů České republiky. Annotated checklist of moths and butterflies of the Czech Republic (Insecta:*

*Lepidoptera*). Biocont Laboratory, Brno, 148 pp. (in Czech and English). – LESAR T. & GOVEDIČ M. 2010: Check List of Slovenian Microlepidoptera. *Natura Sloveniae* **12**: 35–125. – LIŠKA J. 2015: Význačné druhy hmyzu Českého krasu: motýl plochuška *Depressaria floridella* Mann, 1864 (Lepidoptera: Elachistidae). (Significant insect species of the Bohemian Karst: depressariid moth *Depressaria floridella* Mann, 1864 (Lepidoptera: Elachistidae). *Fragmenta Ioanna Collecta* **21**: 27–32. – LIŠKA J., VÁVRA J., PETRŮ M., KRÁLÍČEK M., LAŠTŮVKA A., LAŠTŮVKA Z., MAREK J., ŠUMPICH J. & URČIČÁŘ J. 2008: Faunistic records from the Czech Republic – 262. Lepidoptera: Nepticulidae, Psychidae, Tineidae, Bucculatricidae, Elachistidae, Coleophoridae, Amphibatiidae, Gelechiidae, Tortricidae, Crambidae. *Klapalekiana* **44**: 289–292. – LVOVSKÝ A. 2013: Fauna Europaea: Depressariinae, Oecophoridae. In: KARSHOLT O. & NIEUKERKEN E. J. van (eds): Fauna Europaea: Lepidoptera, Moths. Fauna Europaea, Version 2.6.2, online at <http://www.faunaeur.org/> (accessed 27 August 2015). – MEY W. 2013: Fauna Europaea: Bucculatricidae. In: KARSHOLT O. & NIEUKERKEN E. J. van (eds): Fauna Europaea: Lepidoptera, Moths. Fauna Europaea, version 2.6.2, <http://www.faunaeur.org/> (accessed 27 August 2015). – NEUMANN F. 1971: Zpráva o průzkumu motýlů (Lepidoptera) v okolí obcí Dobrá Voda a Hojná Voda v Novohradských horách. [The report from the research of butterflies and moths (Lepidoptera) in the surrounding of Dobrá Voda and Hojná Voda in the Novohradské Hory Mts]. *Sborník Jihočeského Muzea v Českých Budějovicích, Přírodní Vědy* **11** (Supplementum): 53–62 (in Czech). – NICKERL O. 1894: *Catalogus insectorum faunae bohemicae. III. Die Kleinschmetterlinge (Microlepidoptera)*. Verlag der Physiokratischen Gesellschaft, Prag, 70 pp. – NOVÁK I., LIŠKA J., ELSNER G., JAROŠ J., PETRŮ M., SKYVA J., SPITZER K., ŠPATENKA K., VÁVRA J. & WEIDENHOFER Z. 1997: Katalog motýlů (Lepidoptera) Čech. Katalog der Falter (Lepidoptera) Böhmens. Catalogue of the Bohemian Lepidoptera. *Klapalekiana* **33** (Supplementum): 1–159 (in Czech, German and English introductions). – NOVÁK I. & SPITZER K. 1972: Výsledky faunisticko-ekologického studia Lepidopter (Noctuidae a Geometridae) rašeliniště Mrtvý luh u Volar a okolí. (Results of faunistic-ecology study of Lepidoptera (Noctuidae and Geometridae) of Mrtvý luh near Volary and its surroundings). *Sborník Jihočeského Muzea v Českých Budějovicích, Přírodní Vědy* **12** (Supplementum 1): 1–63 (in Czech, German summary). – NIEUKERKEN E. J. van 2013: Fauna Europaea: Prodoxidae. In: KARSHOLT O. & NIEUKERKEN E. J. van (eds): *Fauna Europaea: Lepidoptera, Moths*. Fauna Europaea, Version 2.6.2, <http://www.faunaeur.org/> (accessed 26 September 2015). – NUSS M., SPEIDEL W. & SEGERER A. 2013: Fauna Europaea: Pyraloidea. In: KARSHOLT O. & NIEUKERKEN E. J. van (eds): *Fauna Europaea: Lepidoptera, Moths*. Fauna Europaea, Version 2.6.2, <http://www.faunaeur.org/> (accessed 27 August 2015). – PASTORÁLIS G., KOSORÍN F., LAŠTŮVKA A., LIŠKA J., RICHTER Ig. & TOKÁR Z. 2011: Nálezy nových drobných motýlův (Microlepidoptera) pre faunu Slovenska. (Records of Microlepidoptera new to the fauna of Slovakia). *Folia Faunistica Slovaca* **16**: 143–150 (in Slovak, English abstract). – PASTORÁLIS G. 2012: A Magyarországon előforduló molylepkefajok jegyzéke, 2012. (A checklist of the Microlepidoptera occurring in Hungary, 2012 (Lepidoptera)). *Microlepidoptera.hu* **5**: 51–146 (in Hungarian, English summary). – RAZOWSKI J. 2003: *Tortricidae of Europe. Volume 2. Olethreutinae*. František Slamka, Bratislava, 301 pp. – ROESLER U. 1973: Phycitinae. Pp. 1–752. In: AMSEL G., GREGOR F. & REISSER H. (eds): *Microlepidoptera Palaearctica, Bd. 4*. G. Fromme & comp., Wien. – SITEK J. & VACULA D. 2014: Faunistic records from the Czech Republic – 371. Lepidoptera: Elachistidae, Scythrididae, Pyralidae, Geometridae. *Klapalekiana* **50**: 255–256. – SKALA H. 1912–1913: Die Lepidopterenfauna Mährens. *Verhandlungen des Naturforschenden Vereines in Brünn* **50** (1912): 63–241, **51** (1913): 115–377. – SKALA H., 1931: Zur Lepidopterenfauna Mährens und Schlesiens. *Acta Musei Moraviensis* **30** (Supplementum): 1–197. – SLAMKA F. 2006: *Pyraloidea (Lepidoptera) of Europe. Volume 1. Identification, distribution, habitat, biology. Pyralinae, Galleriinae, Epipaschiinae, Cathariinae & Odontiinae*. František Slamka, Bratislava, 138 pp., 11 pls of genitalia, 16 colour pls. – STERNECK J. & ZIMMERMANN F. 1933: *Prodromus der Schmetterlingsfauna Böhmens II. (Microlepidoptera)*. Jacob Sterneck, Karlsbad, 168 pp. – STÜBNER A. 2007: Taxonomische Revision der Coleophora frischella-Artengruppe (Coleophoridae). *Nota Lepidopterologica* **30**: 121–172. – ŠEFROVÁ H., LAŠTŮVKA Z., TÓTH P. & SCHORÍKOVÁ A. 2013: Zavijječ zimostrázový působí škody už i u nás. [Cydalima perspectalis is already harmful in the Czech Republic]. *Zahradnictví* **12** (8): 52–53 (in Czech). – ŠUMPICH J. 2011: *Motýli Národních parků Podyjí a Thayatal. Die Schmetterlinge der Nationalparke Podyjí und Thayatal*. Správa NP Podyjí, Znojmo, 428 pp. (in Czech and German). – ŠUMPICH J., LIŠKA J., ELSNER G., ŽEMLIČKA M., MAREK J., DVOŘÁK I., DVOŘÁK M., DOBROVSKÝ T. & SKYVA J. 2006: Faunistic records from the Czech Republic – 202. Lepidoptera: Psychidae, Bucculatricidae, Yponomeutidae, Acrolepiidae, Depressariidae, Oecophoridae, Scythrididae, Lecithoceridae, Gelechiidae, Tortricidae, Urodidae, Epermeniidae, Pyralidae, Noctuidae, Arctiidae. *Klapalekiana* **42**: 181–187. – ŠUMPICH J., LIŠKA J., MAREK J., POTOCKÝ P., ELSNEROVÁ M., ELSNER V., ŠIMAN L., URČIČÁŘ J., VODPILIND B., SKYVA J. & BĚLÍN V. 2010: Faunistic records from the Czech Republic – 303. Lepidoptera: Acrolepiidae, Gracillariidae,

Scythrididae, Coleophoridae, Autostichidae, Tortricidae, Geometridae, Noctuidae. *Klapalekiana* **46**: 231–235. – ŠUMPICH J. & SKYVA J. 2008: Faunistic records from the Czech Republic – 255. Lepidoptera: Tineidae, Gracillariidae, Gelechiidae, Tortricidae, Alucitidae, Pyralidae. *Klapalekiana* **44**: 83–85. – ŠUMPICH J., ŽEMLIČKA M. & DVOŘÁK I. 2013: Příspěvek k fauně motýlů (Lepidoptera) severních Čech – I. (On the lepidopteran fauna (Lepidoptera) of northern Bohemia – I). *Sborník Severočeského Muzea, Přírodní Vědy* (Liberec) **31**: 67–168 (in Czech, English summary). – VERNER P. (ed.) 1965: Výzkum fauny závodů potravinářského průmyslu. Závěrečná zpráva. Dílčí úkol č. 1. [Research of fauna in works of the food industry. Final report. Partial target No 1.] VÚPP, Praha, 556 pp. (unpublished report, deposited in Food Research Institute Prague, in Czech). – ZIMMERMANN F. 1943: Jahresbericht des Sudetendeutschen Entomologenbundes für das Jahr 1941 – Microlepidoptera. *Entomologische Zeitschrift (Frankfurt a. M.)* **56**: 253–256. – ZIMMERMANN F. & SKALA H. 1947: Kleinfalter aus Mähren-Schlesien. *Zeitschrift der Wiener Entomologischen Gesellschaft* **31**: 121–123.

Jan LIŠKA, Forestry and Game Management Research Institute Jíloviště-Strnady,  
CZ-156 04 Praha 5-Zbraslav, Czech Republic; e-mail: liska@vulhm.cz

Jan ŠUMPICH, Department of Entomology, National Museum, Cirkusová 1470,  
CZ-193 00 Praha 9 - Horní Počernice, Czech Republic; e-mail: jansumpich@seznam.cz

Gustav ELSNER, Hůlkova 304, CZ-197 00 Praha 9-Kbely, Czech Republic;  
e-mail: gelsner@seznam.cz

Jaroslav MAREK, Venhudova 21, CZ-614 00 Brno, Czech Republic

Zdeněk LAŠTŮVKA, Mendel University in Brno, Zemědělská 1, CZ-613 00 Brno,  
Czech Republic; e-mail: last@mendelu.cz

Jan SKYVA, Buzulucká 3, CZ-160 00 Praha 6 – Dejvice, Czech Republic; e-mail: jansky-  
va@seznam.cz

Miroslav ŽEMLIČKA, Peškova 532, CZ-403 31 Ústí nad Labem, Czech Republic

Aleš LAŠTŮVKA, Slavičková 15, CZ-796 01 Prostějov, Czech Republic;  
e-mail: aleslastuvkaento@seznam.cz

Ivo DVOŘÁK, Vrchlického 29, CZ- 586 01 Jihlava, Czech Republic;  
e-mail: ivo.dvorak@post.cz

Jan SITEK, Hasičská 3031, CZ-738 01 Frýdek-Místek, Czech Republic;  
e-mail: jansitek007@gmail.com

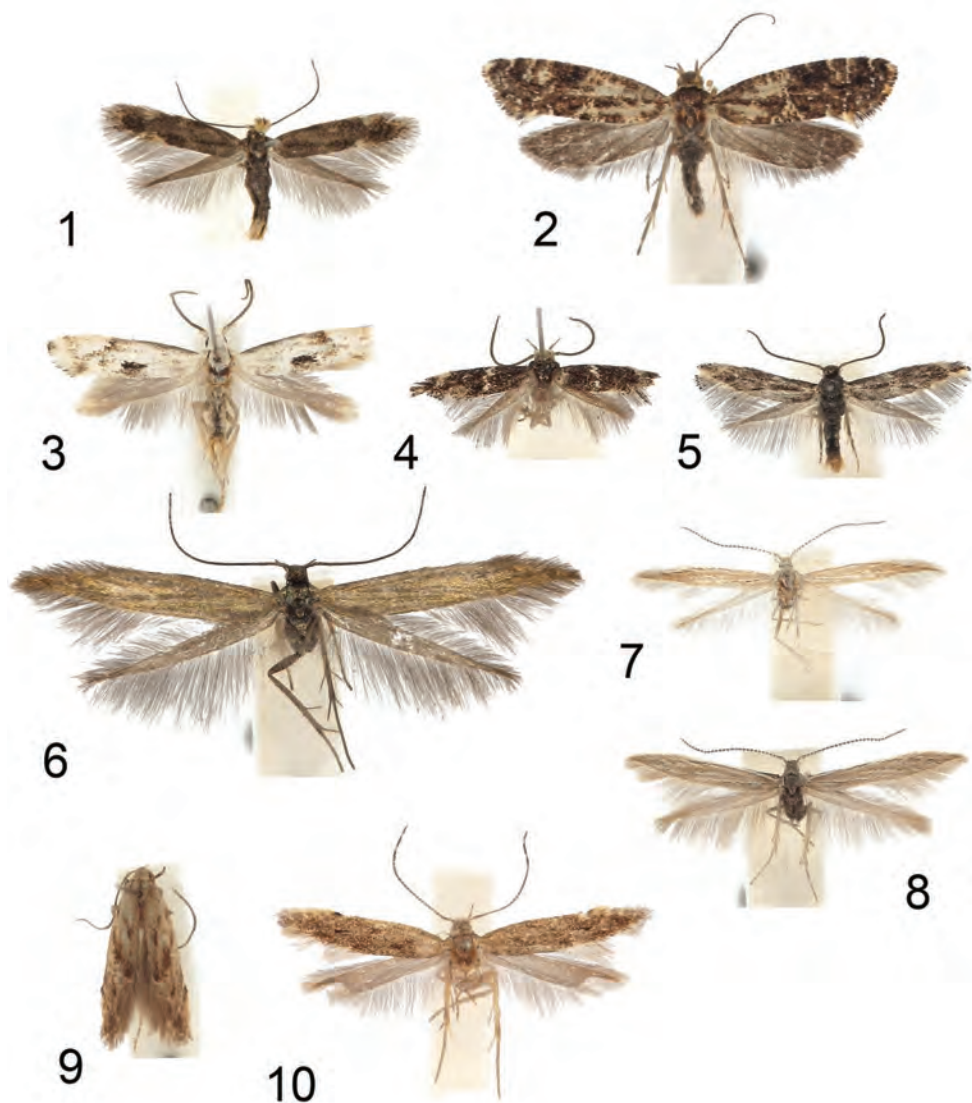
Tomáš JIRGL, Nám. pod Martinem 128, CZ-277 13 Kostelec nad Labem; e-mail: tjirgl@  
seznam.cz

Miloš KNÍŽEK, Forestry and Game Management Research Institute Jíloviště-Strnady,  
CZ-156 04 Praha 5-Zbraslav, Czech Republic; e-mail: knizek@vulhm.cz

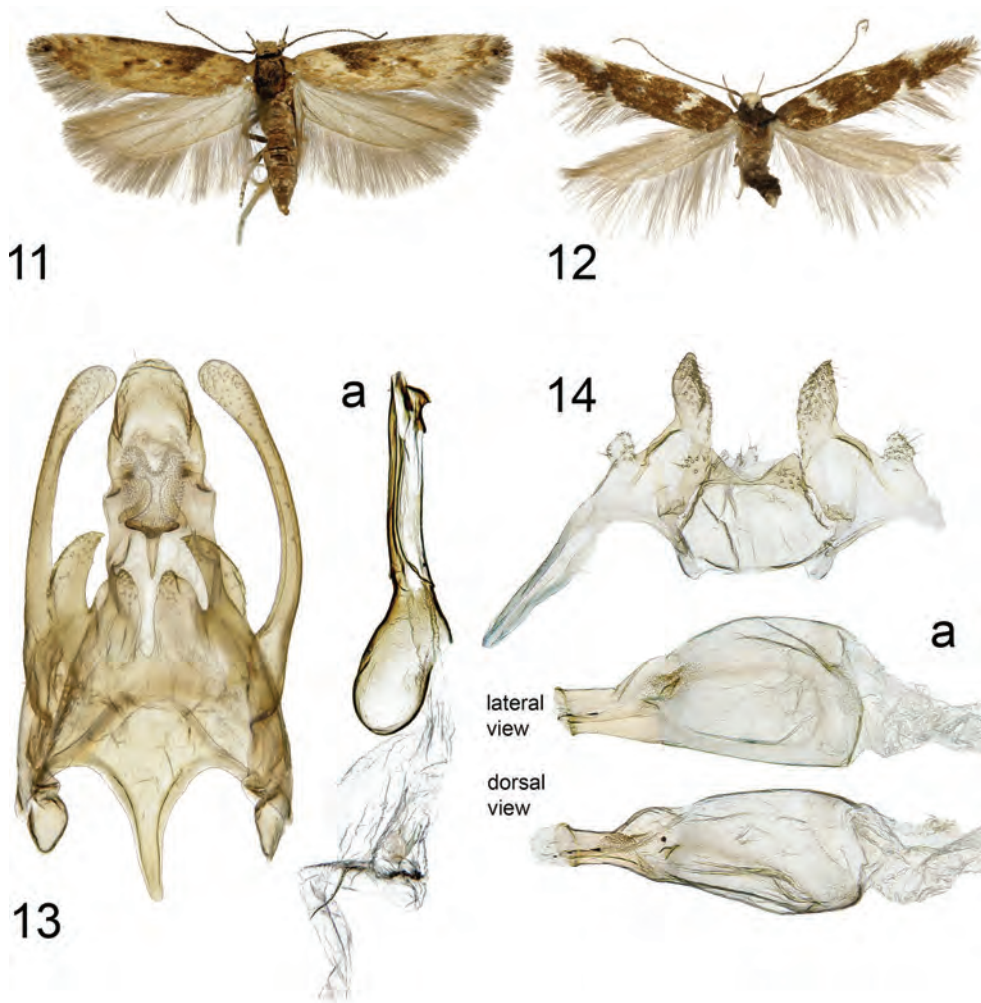
Jan UŘIČÁŘ, Růžová 1178, CZ-697 01 Kyjov, Czech Republic; e-mail: januricar@cent-  
rum.cz

Tomáš KURAS, Department of Ecology, Palacký University of Olomouc, Tř. Svobody 26,  
CZ-771 46 Olomouc, Czech Republic; e-mail: tomas.kuras@upol.cz



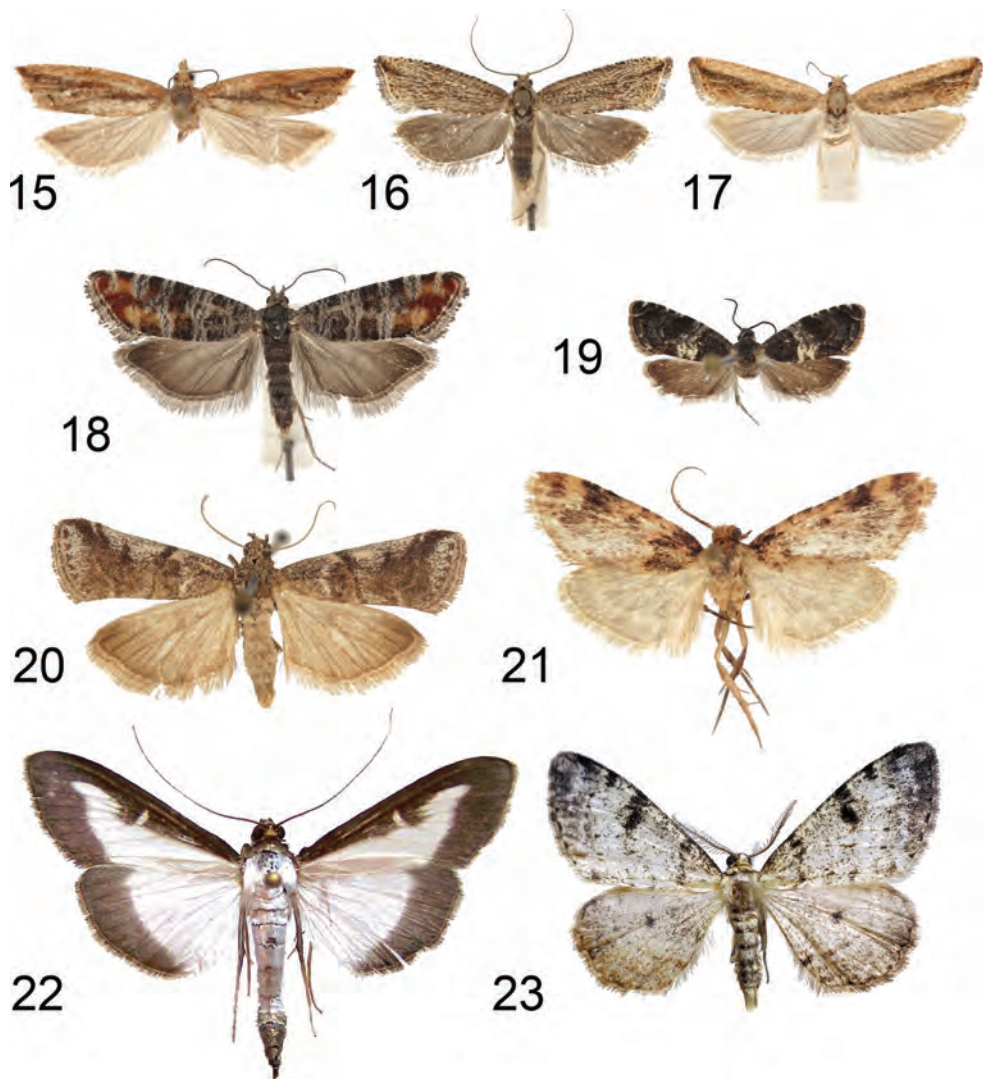


Figs 1–10. Voucher specimens of recorded species. 1. *Bucculatrix humiliella* Herrich-Schäffer, 1855. Lanžhot, ♂; 2. *Acrolepia autumnitella* Curtis, 1838. Hrabětice, ♂; 3. *Elachista scirpi* Stainton, 1887. Hrabětice, ♂; 4–5. *Elachista consortella* Stainton 1851, ♂. 4. Hodonín-Pánov, 5. Lanžhot-Soutok; 6. *Coleophora frischella* (Linnaeus, 1758). Lanžhot-Soutok, ♂; 7–8. *Coleophora frankii* Schmidt, 1886. 7. Bořetice-Zázmoníky, ♀; 8. Bořetice-Zázmoníky, ♂; 9–10. *Monochroa arundinetella* (Boyd 1857), ♂. 9. Františkovy Lázně; 10. Oleksovice. (Photo: J. Šumpich).  
 Obr. 1–10. Sbírkové doklady zaznamenaných druhů. 1. *Bucculatrix humiliella* Herrich-Schäffer, 1855. Lanžhot, ♂; 2. *Acrolepia autumnitella* Curtis, 1838. Hrabětice, ♂; 3. *Elachista scirpi* Stainton, 1887. Hrabětice, ♂; 4–5. *Elachista consortella* Stainton 1851, ♂. 4. Hodonín-Pánov, 5. Lanžhot-Soutok; 6. *Coleophora frischella* (Linnaeus, 1758). Lanžhot-Soutok, ♂; 7–8. *Coleophora frankii* Schmidt, 1886. 7. Bořetice-Zázmoníky, ♀; 8. Bořetice-Zázmoníky, ♂; 9–10. *Monochroa arundinetella* (Boyd 1857), ♂. 9. Františkovy Lázně; 10. Oleksovice. (Foto: J. Šumpich).



Figs 11–14. Voucher specimens of commented species. Fig. 11–12. *Scrobipalpa hyoscyamella* (Stainton, 1869), Vrdy, ♂; 11. Adult. 12. Male genitalia. Fig. 13–14. *Eulamprotes libertinella* (Zeller, 1872), Zbraslavice, ♂. 13. Adult; 14. male genitalia; a – phallus. (Photo: G. Elsner).

Obr. 11–14. Sbírkové doklady komentovaných druhů. Fig. 11–12. *Scrobipalpa hyoscyamella* (Stainton, 1869), Vrdy, ♂; 11. Dospělec. 12. Samčí genitálie. Fig. 13–14. *Eulamprotes libertinella* (Zeller, 1872), Zbraslavice, ♂. 13. Dospělec; 14. Samčí genitálie; a – falus. (Foto: G. Elsner).



Figs 15–23. Voucher specimens of recorded species. 15–17. *Bactra robustana* (Christoph, 1872), ♀. 15. Hlinsko; 16. Velké Bílovice; 17. Hrabětice; 18. *Rhyacionia duplana* (Hübner, [1813]). Bzenec, ♀; 19. *Cydia exquisitana* (Rebel, 1899). Valtice, ♀; 20. *Acrobasis dulcella* (Zeller, 1848). Praha-Šárka, ♂; 21. *Aglossa caprealis* (Hübner, [1809]). Lanžhot, ♂; 22. *Cydalima perspectalis* (Walker, 1859). Káraný, ♂; 23. *Alcis jubata* (Thunberg, 1788). Stožec, ♂. (Photo: J. Šumpich (15–21), T. Jirgl (22), J. Uříčář (23)).

Obr. 15–23. Sbírkové doklady zaznamenaných druhů. 15–17. *Bactra robustana* (Christoph, 1872), ♀. 15. Hlinsko; 16. Velké Bílovice; 17. Hrabětice; 18. *Rhyacionia duplana* (Hübner, [1813]). Bzenec, ♀; 19. *Cydia exquisitana* (Rebel, 1899). Valtice, ♀; 20. *Acrobasis dulcella* (Zeller, 1848). Praha-Šárka, ♂; 21. *Aglossa caprealis* (Hübner, [1809]). Lanžhot, ♂; 22. *Cydalima perspectalis* (Walker, 1859). Káraný, ♂; 23. *Alcis jubata* (Thunberg, 1788). Stožec, ♂. (Foto: J. Šumpich (15–21), T. Jirgl (22), J. Uříčář (23)).



Figs 24–29. Life stages of *Cydalima perspectalis* (Walker, 1859). 24–25. Adults. 24. Male. 25. Female. 26. Caterpillar. 27. Pupae. 28–28. Host plant *Buxus sempervirens*. 24–27, 29. Brno. 28. Praha-Bubeneč. (Photo: Z. Laštůvka (24–27, 29), J. Liška (28)).

Obr. 24–29. Životní projevy *Cydalima perspectalis* (Walker, 1859). 24–25. Dospělci. 24. ♂. 25. ♀. 26. Housenka. 27. Kukla. 28–28. Živná rostlina *Buxus sempervirens*. 24–27, 29. Brno. 28. Praha-Bubeneč. (Foto: Z. Laštůvka (24–27, 29), J. Liška (28)).